



BROOKLAND INFANT AND NURSERY SCHOOL DRUG EDUCATION AND MANAGING DRUG RELATED INCIDENTS POLICY

Updated: October 2020

This policy was written in consultation with staff, pupils, parents and governors.

1. Rationale

Brookland Infant and Nursery School recognises the harm that all drugs can have, be they illegal (cocaine, cannabis, heroin etc) legal (alcohol, cigarettes and solvents) or medicines. We aim, through this policy, and it's guidelines to provide clear and consistent procedures, which promote safety and good management.

2. Aims

- 2.1 To help young people resist drug misuse in order to achieve their full potential in society
- 2.2 To promote and safeguard health and safety of pupils and staff within the school
- 2.3 To endorse a range of learning and supportive responses for those involved in an incident
- 2.4 To encourage an environment where there is a supportive response to incidents
- 2.5 To ensure this policy is fully implemented and disseminated to ensure understanding and adopting for all of those connected with the school; pupils, parents, staff and governors.

3. Contents & Organisation of Drug Education

3.1 The school aims to provide a programme of drug education in line with the PSHE education scheme of work. By the end of KS1 children should be able to identify harmful and safe substances in the home and or school including household chemical products, medicines, tobacco and alcohol. Children are taught how to seek appropriate help from adults should they come into contact or possession of such items.

3.2 The school will provide monitoring data to the Local Authority on content and effectiveness of Drug education in line with the National Drug Strategy reporting process.

4. Managing Drug Related Incidents Procedure

Our definition of drug includes medicines, alcohol and tobacco it is therefore important that all aspects of an incident are considered. The needs and circumstances of the pupils are paramount.

We will consider each situation individually and recognise that a variety of actions in response may be necessary to drug related incidents as recommended by: DfE and ACPO drug advice for schools: <https://www.gov.uk/government/publications/drugs-advice-for-schools>

If the situation leads to a medical emergency the school emergency aid procedures will be followed immediately. In an infant school it is likely that the situation will involve accidental taking of drugs which could result in a medical emergency. All cases will be referred to the headteacher or a school designated safeguarding officer.

In the absence of a medical emergency the headteacher will be informed and an appropriate response considered. We will refer to the *DfE and ACPO drug advice for schools* on responding to drug related incidents and in determining the response the implications of any action we take will be carefully considered. The focus of any response will be the student not the substance and we will seek to balance the interests of the individual, other members of the school community and the wider community.

All instances involving an infant school child being in possession of medicines, alcohol or tobacco will be considered a safeguarding concern and the school's safeguarding procedures will be followed. Unless there are exceptional circumstances we will inform parents /carers at the earliest opportunity so that we can work together to support the pupil.

Responses will be cross-referenced with related school policies such as:

- Behaviour
- Health and Safety
- Child Protection
- School Visits

Our aim is to enable all pupil to fulfil their potential. We will work with the pupil, their parents or carers and colleagues from other agencies to remove barriers to achievement and resolve any difficulties that exist. Drug related situations will be considered alongside other circumstances in the young person's life and not in isolation.

Should a substance suspected of being illicit be found on the school premises it will be handed to the headteacher and, in the presence of another member of staff placed in a sealed container in the school safe until it can be delivered to or collected by a police officer. S/he will also be involved in advising the school on the most appropriate response to the situation. The Local Authority School Drug Adviser and Drug & Alcohol Action Team are also able to provide guidance and advice.

All staff will be made aware of the legal constraints on gathering evidence and questioning those involved. They will not take action without involving the headteacher.

There is a range of professional colleagues who can give or obtain advice and support in drug or alcohol related situations. These include the school's Education Welfare Officer, the local Police Liaison Officer, the local Drug and Alcohol agencies and counselling services. These colleagues can help with a needs assessment and support the school in developing an appropriate response.

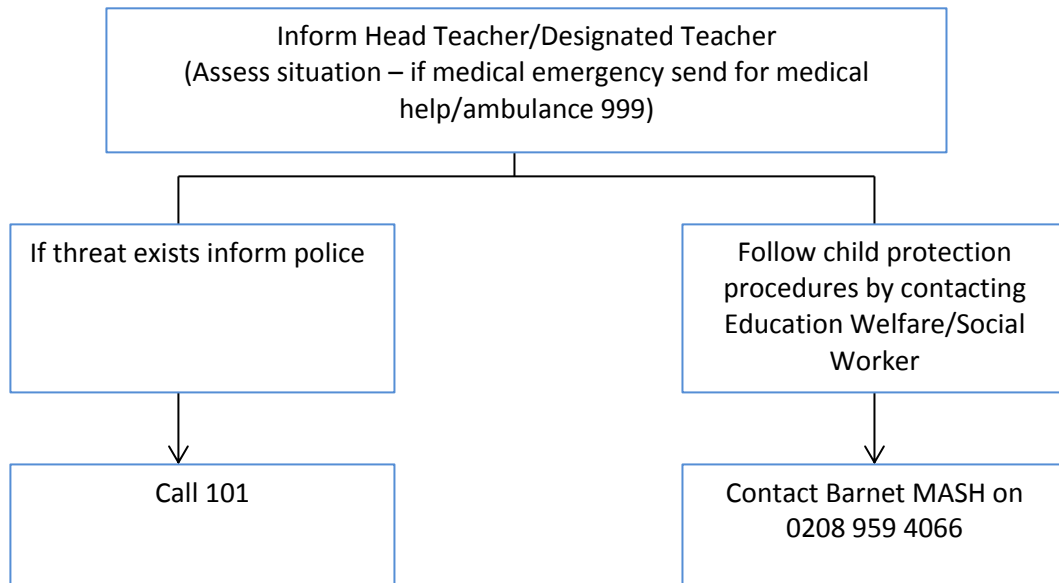
5. Smoking Statement

We are a smoke free school and staff, parents, pupils and visitors are not allowed to smoke anywhere on school premises or in sight of the school. Smoke free signage is prominent around our school grounds.

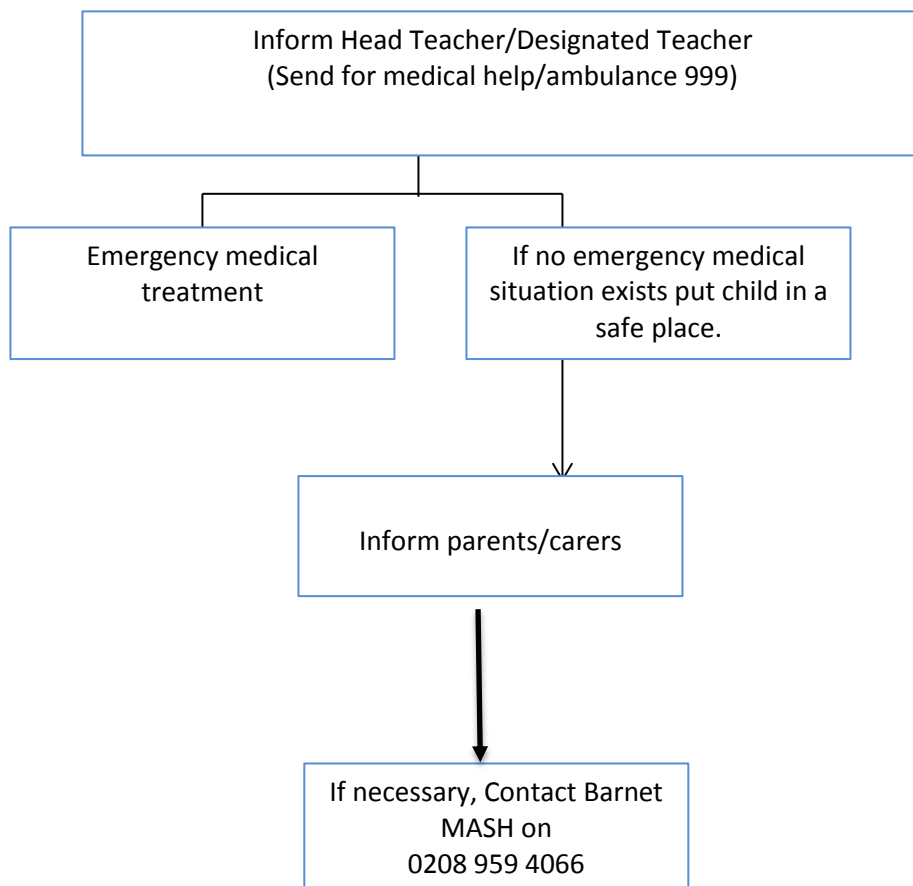
E-cigarettes (sometimes known as nicotine vaporisers)

Although e-cigarettes are not covered by smoking legislation, we are not allowing the use of e-cigarettes by pupils, staff, parents, contractors or visitors on the school premises.

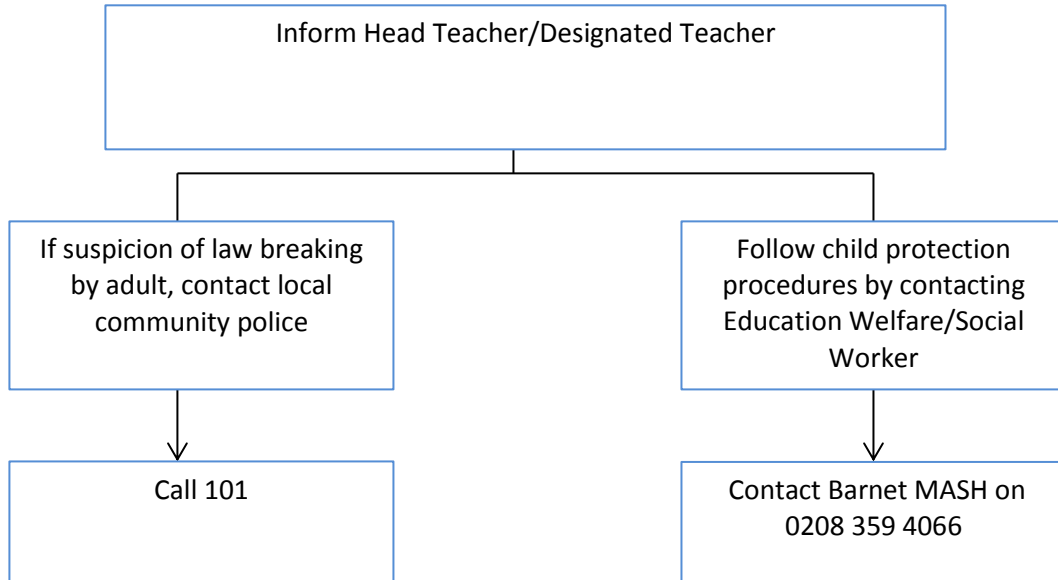
Parents/Carers/Others under the influence of drugs /alcohol on school premises.



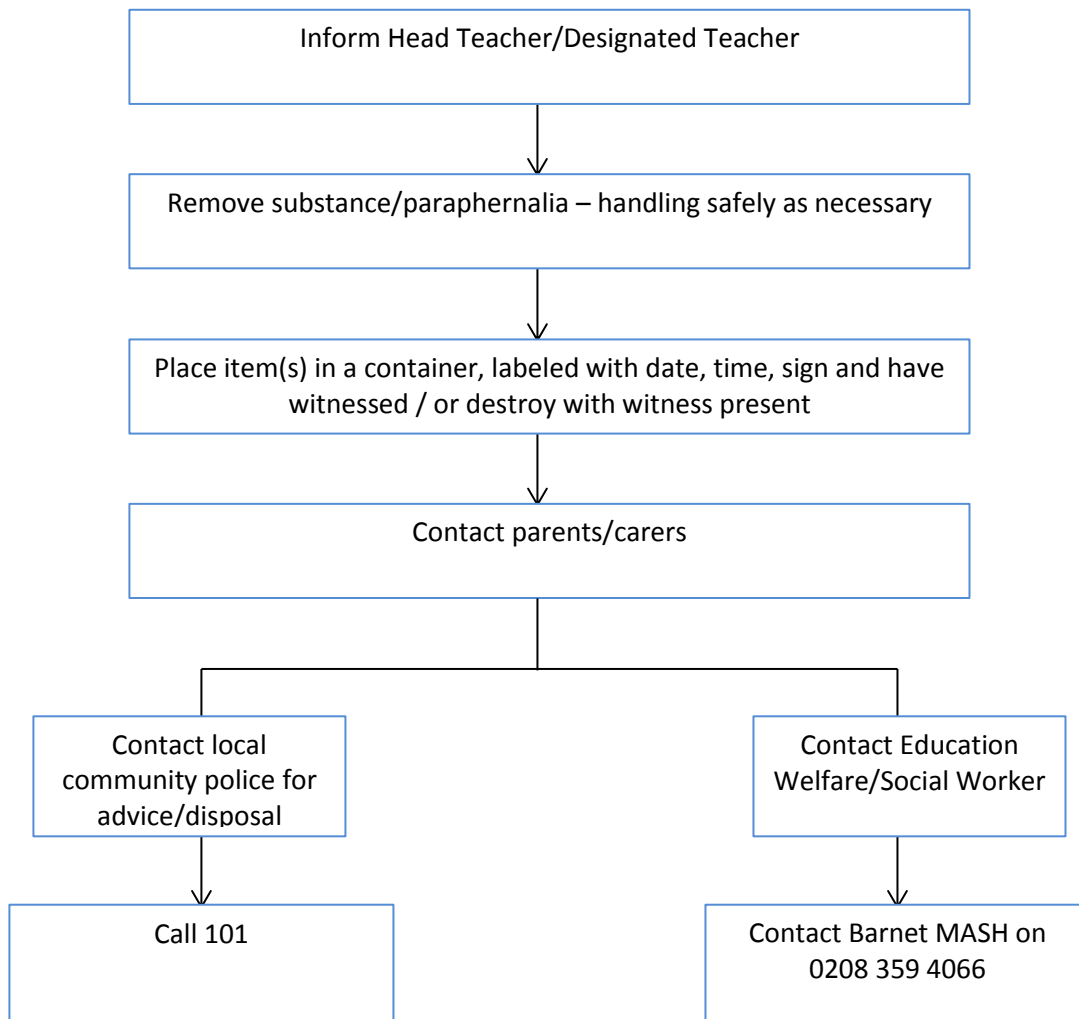
Pupils using medicines inappropriately on school premises.



Pupils makes disclosure about their own or parents/carers/others use of drugs/alcohol



Drugs and / or paraphernalia found on pupils and/or premises



Supplying (drugs/alcohol/tobacco) by pupils/parents/carers/others

